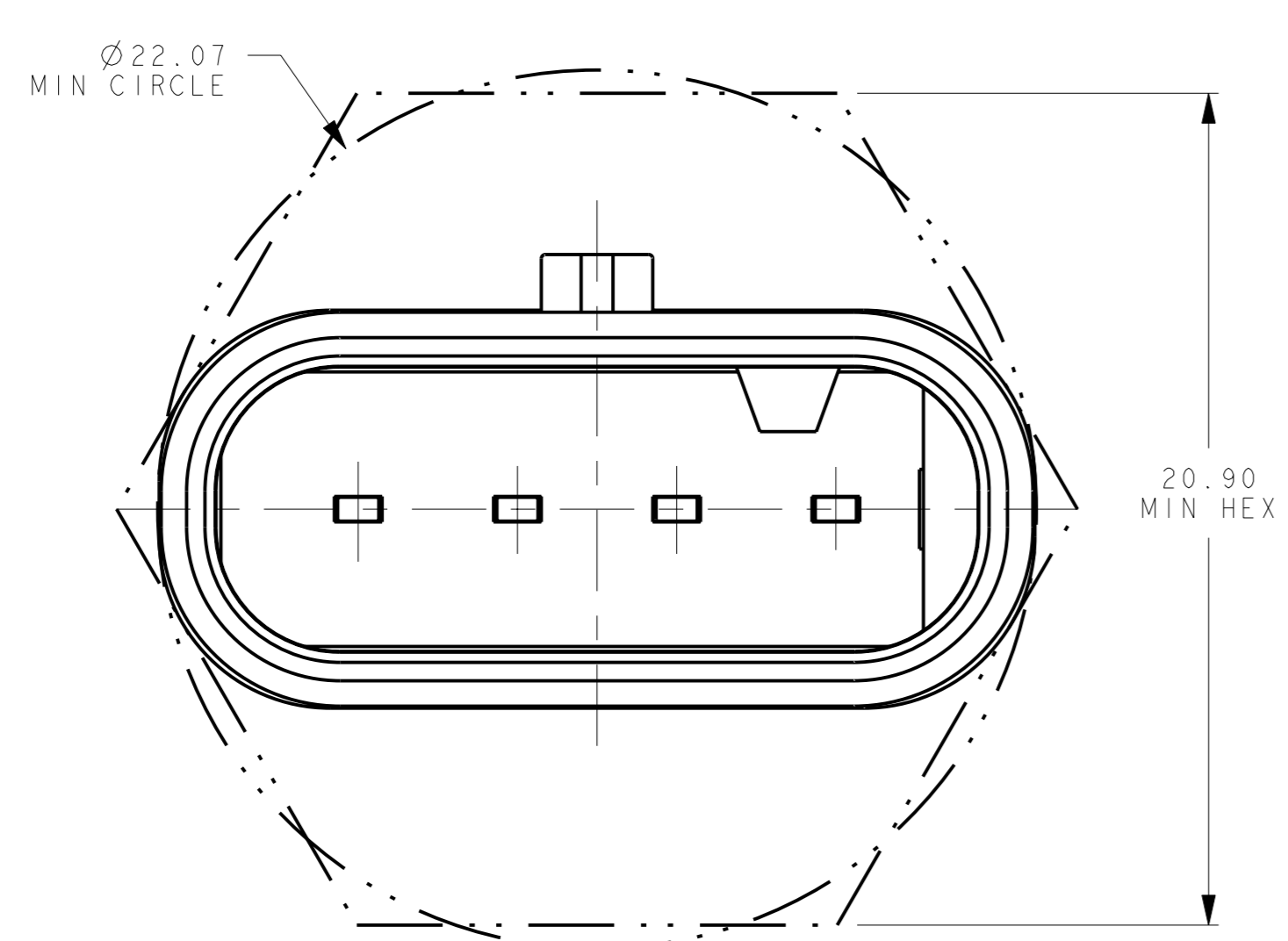
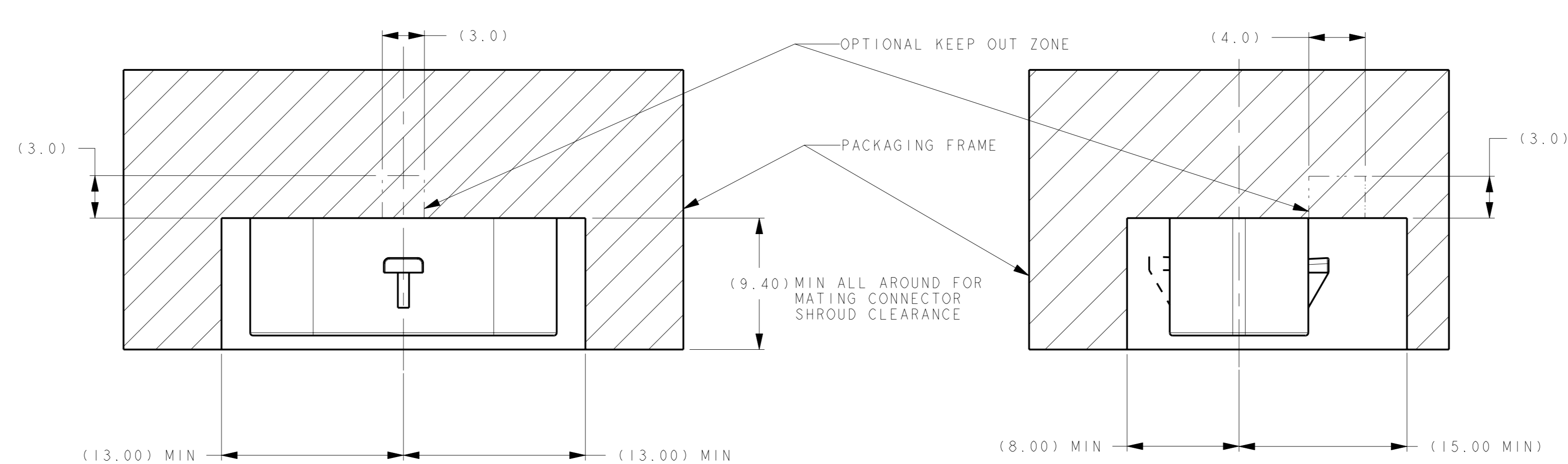




POLARIZATION VIEWS



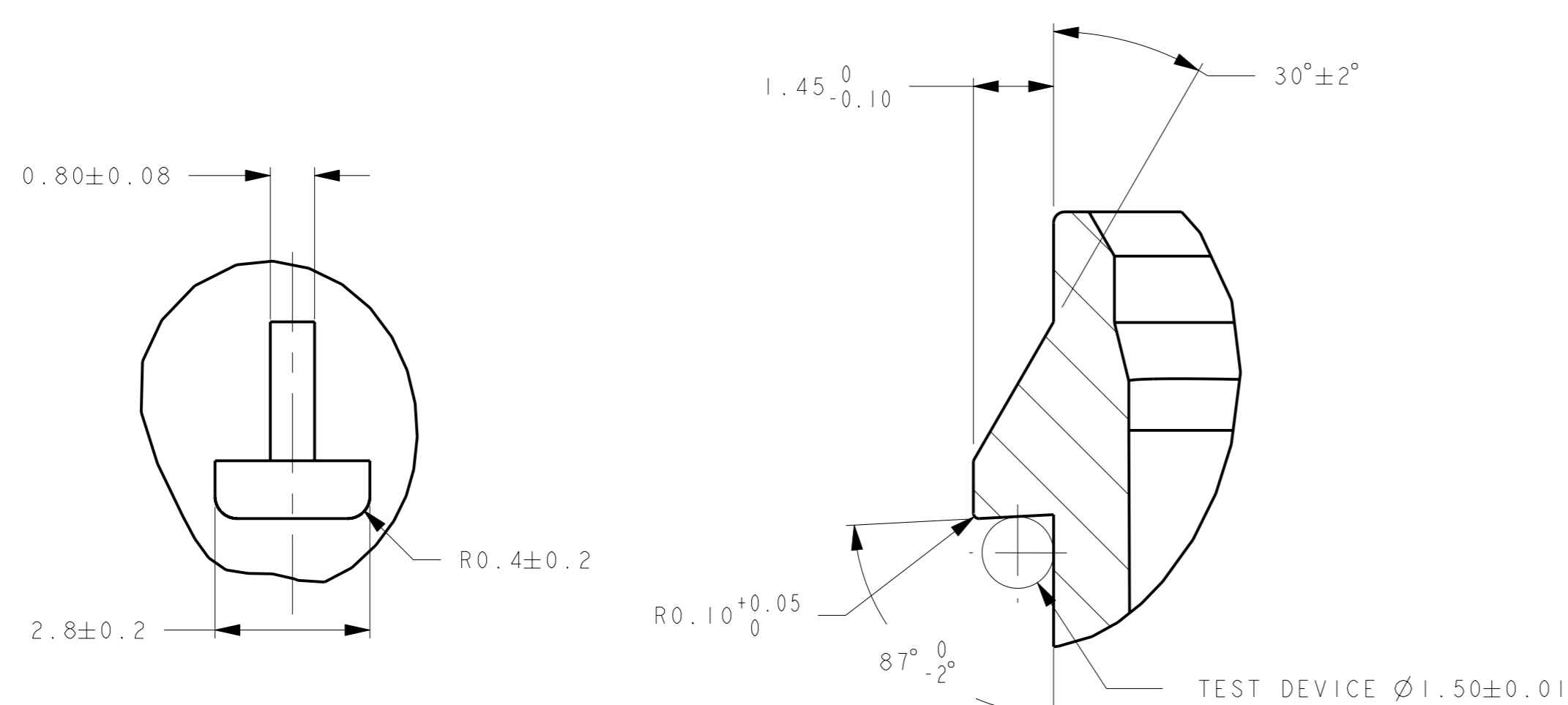
MINIMUM FIT SIZE - PROVIDED FOR
INFORMATIONAL PURPOSES ONLY
(BASED ON MAXIMUM MATERIAL CONDITION)



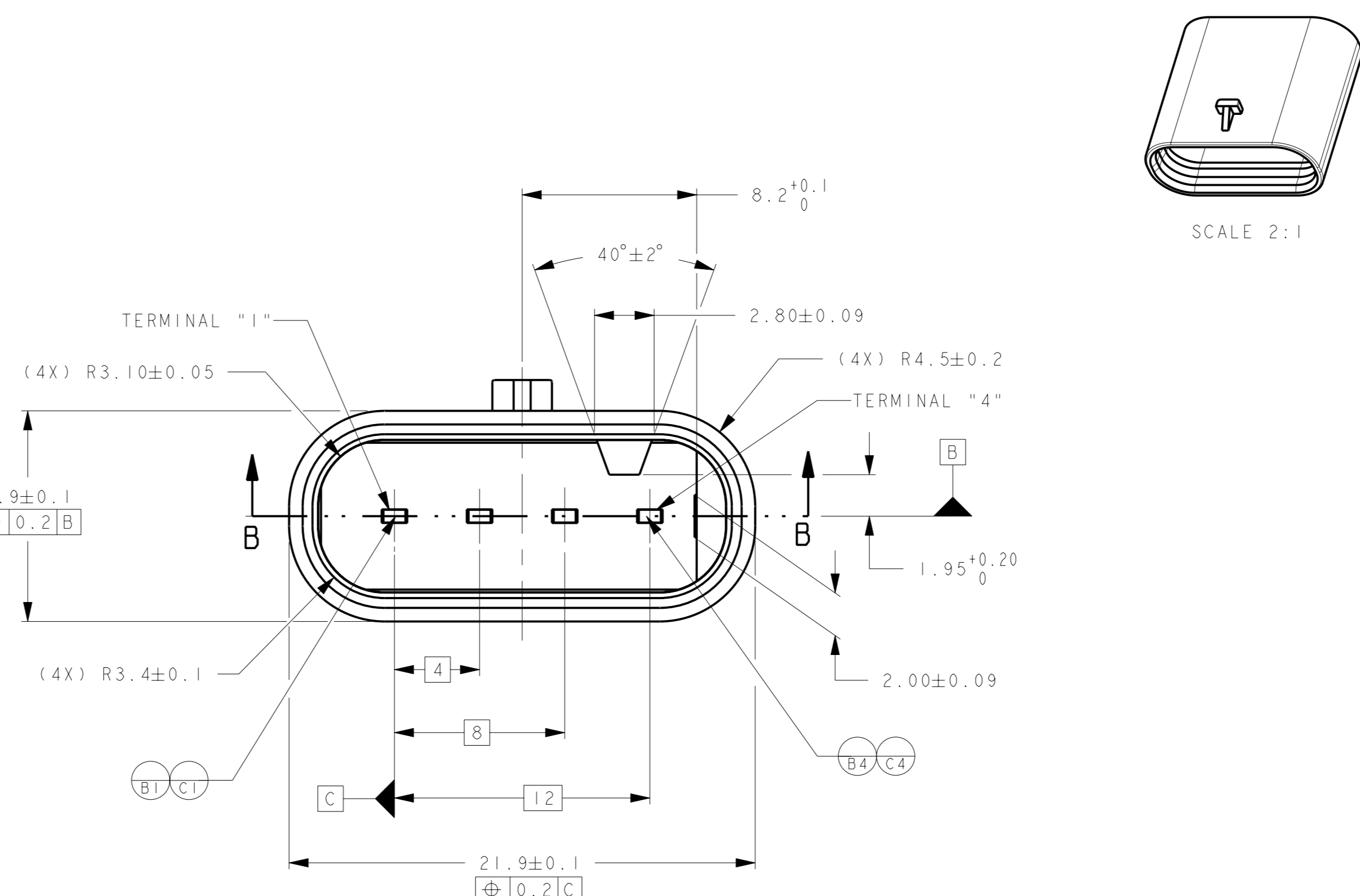
IF THE HEADER IS RECESSED INTO A POCKET, THESE DIMENSIONS REPRESENT THE MINIMUM CLEARANCE REQUIRED FOR THE MATING CONNECTOR SHROUD

NOTICE

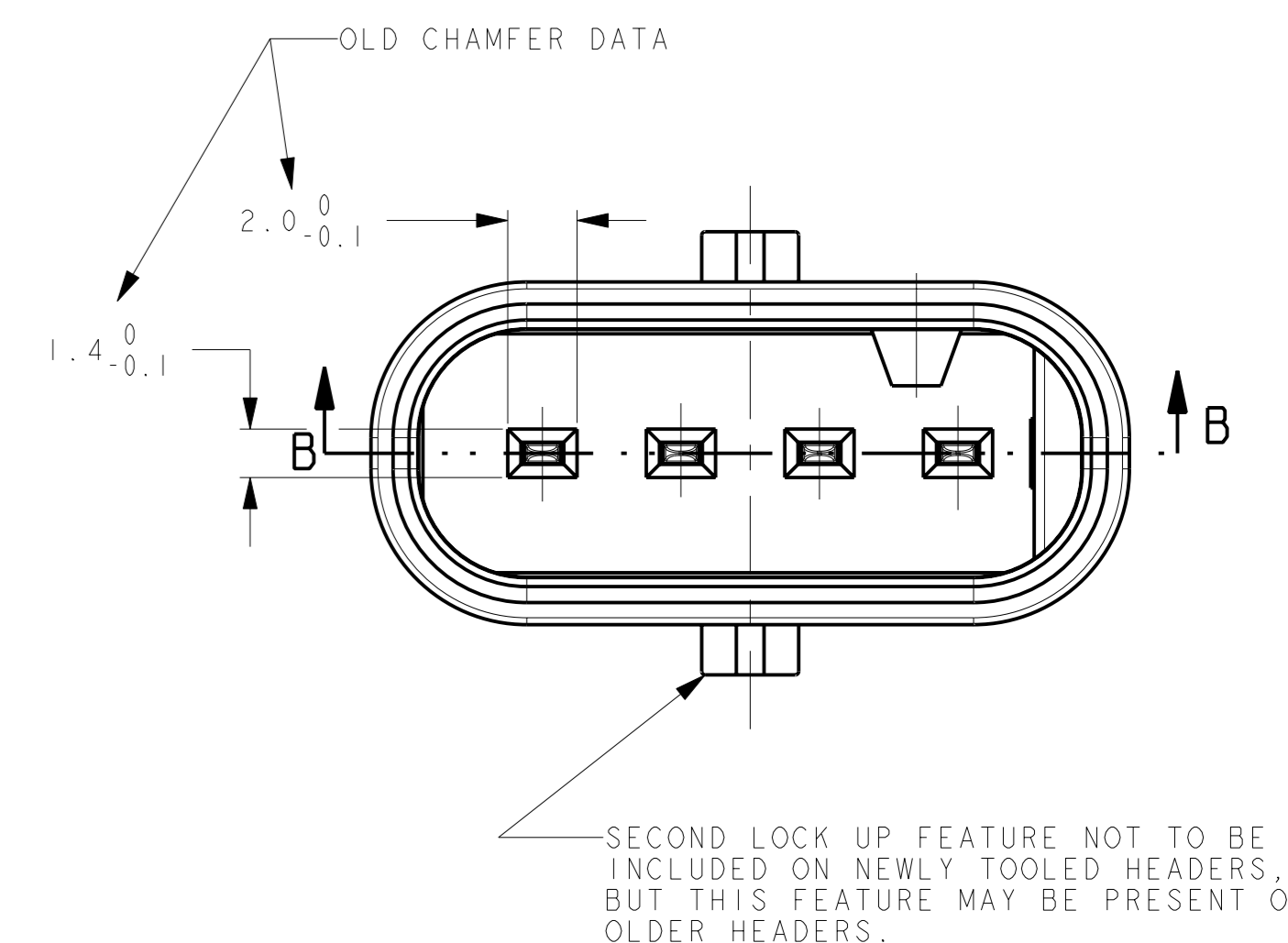
THIS DRAWING, OR PORTIONS OF IT, ARE CONTROLLED BY THE ELECTRICAL WIRING COMPONENTS APPLICATION PARTNERSHIP (EWCAP), A SUBGROUP OF THE UNITED STATES CONSORTIUM FOR AUTOMOTIVE RESEARCH (USCAR). USCAR IS A JOINTLY OWNED ENTITY BETWEEN DAIERZ SLEASER CORPORATION, FORD MOTOR COMPANY, AND GENERAL MOTORS CORPORATION. ANY CHANGE TO A EWCAP CONTROLLED PORTION OF THIS DRAWING, INCLUDING A "RECORD CHANGE," MUST BE APPROVED, IN WRITING, BY THE RESPONSIBLE EWCAP MEMBER COMPANY FOR EACH COMPANY. THE RESPONSIBLE EWCAP MEMBER COMPANY IS TO SIGN FOR HIS OR HER COMPANY IS RESPONSIBLE FOR OBTAINING ALL NECESSARY APPROVALS WITHIN THAT COMPANY PRIOR TO SIGNING FOR APPROVAL OF THE CHANGES. EWCAP EXPRESSLY RESERVES THE RIGHT FROM CHANGING EITHER ANY EWCAP CONTROLLED PORTION OF THIS DRAWING OR ANY ASSOCIATED TOOLING BEFORE RECEIVING AN APPROVAL SIGNED BY AN AUTHORIZED REPRESENTATIVE FROM EACH EWCAP PARTNER. REFERENCE TO THE SIGNED APPROVAL FORM MUST BE ENTERED IN THIS DRAWING'S CONTROL COLUMN.



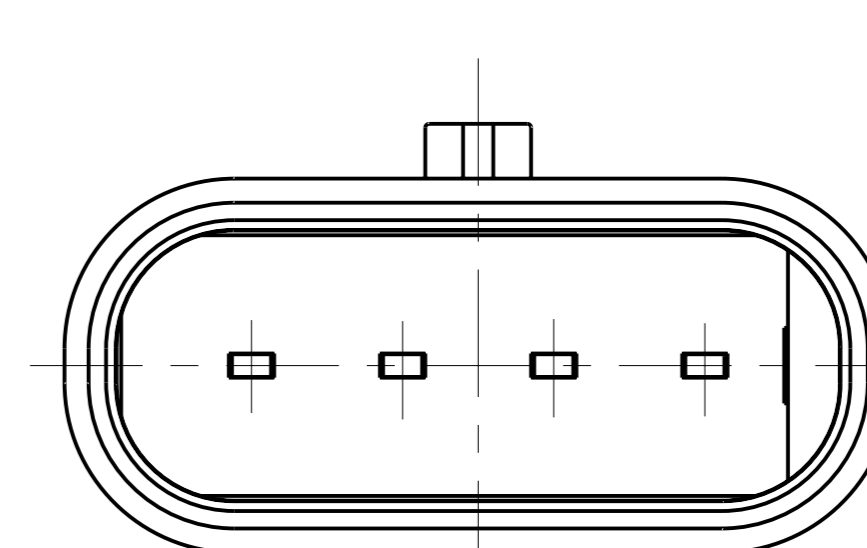
LATCH CONSTRUCTION



SCALE 2:1

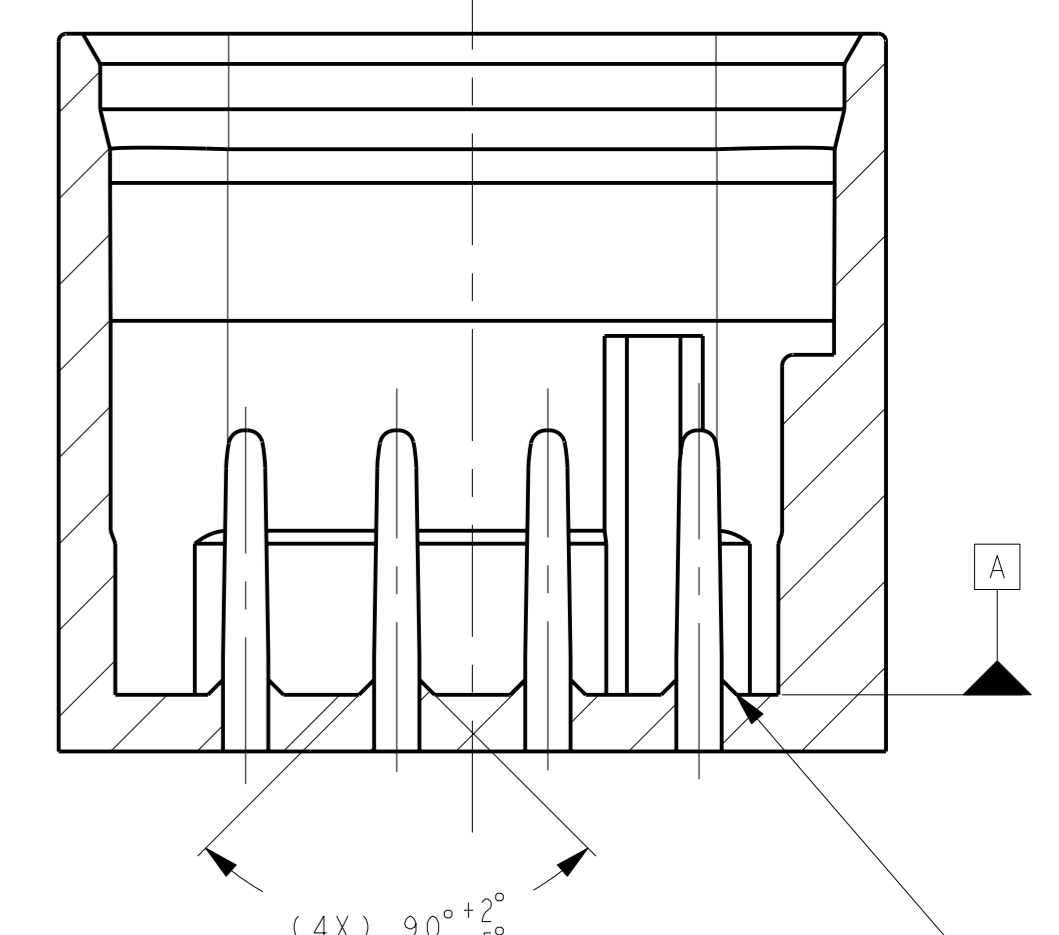


—SECOND LOCK UP FEATURE NOT TO BE INCLUDED ON NEWLY TOOLED HEADERS, BUT THIS FEATURE MAY BE PRESENT ON OLDER HEADERS.



KEYING OPTION 2

THIS UNIVERSAL KEY OPTION IS NOT APPROVED BY USCAR/EWCAP FOR USE ON ORIGINAL EQUIPMENT DEVICES. HOWEVER, THIS KEY OPTION COULD BE ENCOUNTERED ON OLDER DEVICES.

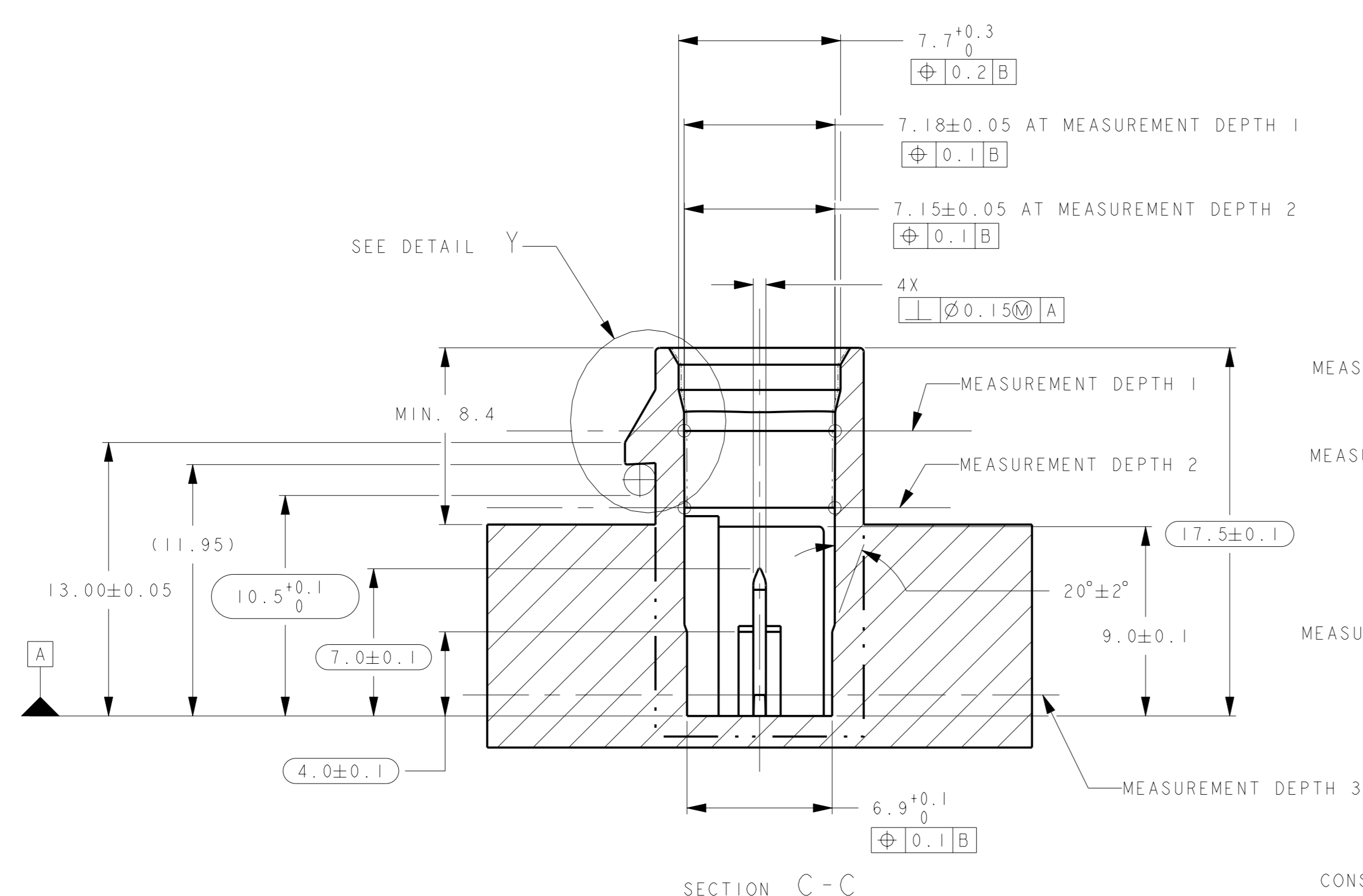


OLD CHAMFER DATA—

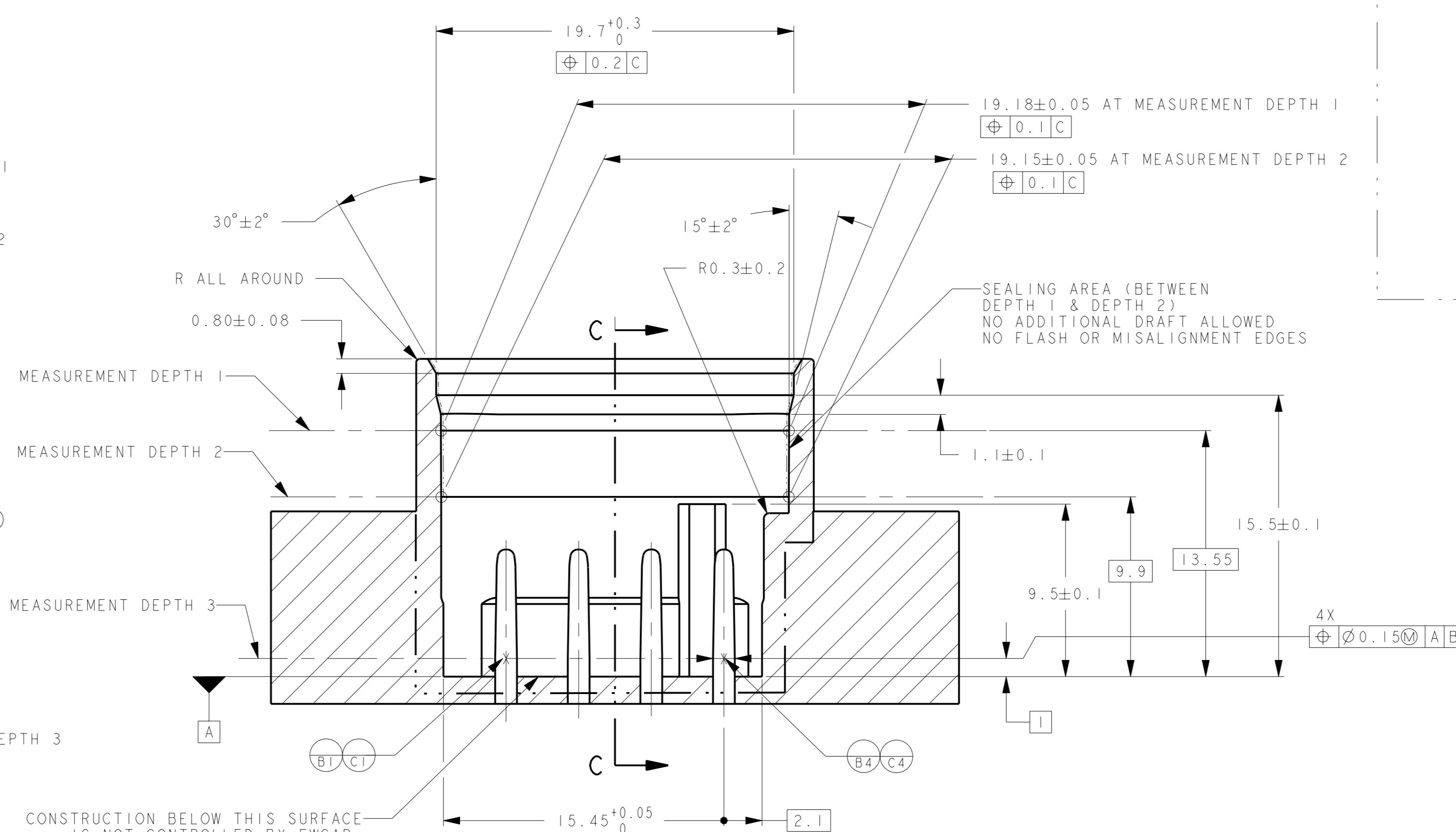
TERMINAL CHAMFER FEATURE NOT —
TO BE INCLUDED ON NEWLY TOOLED
HEADERS, BUT THIS FEATURE MAY
BE PRESENT ON OLDER HEADERS.

SECTION B-B

PROVIDED FOR INFORMATIONAL PURPOSE ONLY



SECTION C-C

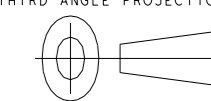



CONSTRUCTION BELOW THIS SURFACE
IS NOT CONTROLLED BY EWCAP.
NO PLASTIC FEATURES MAY
EXTEND ABOVE THIS SURFACE

SECTION B-B

NOTES: UNLESS OTHERWISE SPECIFIED

1. ALL DIMENSIONS SHOWN IN MILLIMETERS.
2. DIMENSIONING AND TOLERANCING PER ASME Y14.5M-1994
3. RADIi ON ALL CORNERS SHOWN SHARP OR ALL UNSPECIFIED RADIi: 0.25 EXCEPT AS NOTED.
4. A FULL SHROUD ON THE MATING CONNECTOR IS REQUIRED TO INSURE THAT THE CONNECTOR-HEADER POLARIZATION FEATURES (OPTIONS A THRU H) WILL FUNCTION. THE FULL SHROUD ALSO PREVENTS SCOOP DAMAGE TO THE HEADER. REFER TO THE REFERENCE DESIGN GUIDE "CONNECTION DESIGN GUIDE LINES" FOR ADDITIONAL INFORMATION.
5. REFER TO USCAR/EWCAP PART LIST AS FOUND ON WEBSITE [HTTP://WWW.USCARTEAMS.ORG](http://www.uscarteams.org)
6. FOR BLADE BASE MATERIAL, PLATING AND PROCESS LUBRICANT SEE EWCAP DRW. NO. EWCAP-001
7. THIS PART HAS BEEN PREVIOUSLY DESIGNED AND TOOLED WITH THE DATUM REFERENCES AS SHOWN. THE DATUM REFERENCE USED ON THIS DRAWING IS DIFFERENT OVER THE EWCAP DRAWING GUIDELINE DATUM REFERENCE REQUIREMENT.

082	B	ADDED KEYING OPTIONS F, T, G, & H AND ADDED NOTE FOR CONNECTION BELOW DATUM A	05-18-10	SR	FAH
-	A	RELEASED	01-08-09	SR	FAH
CHANGE SERIAL NUMBER	LET	REVISION RECORD	DATE	DWN	CHK
TOLERANCES (UNLESS OTHERWISE SPECIFIED) DIMENSIONS ARE IN MILLIMETERS ANGLES ±					
$X.X \pm 0.25$ $X.XX \pm 0.10$					
					
SCALE		5:1	DRAWN BY		RANGARAJAN
			CHECKED BY		FRANK HOLUB
TITLE					DATE
					11-20-2008
DIRECT CONNECT INTERFACE 4 WAY (1 X 4) 1.2MM SEALED MALE					
SHEET	DRAWING NUMBER		SIZE	DO NOT SCALE DRAWING COMPUTER AIDED DRAWING	REVISION LEVEL
1	120-S-004-1-Z01				B

FCI
PCI05606